



Cambridge International AS & A Level

GEOGRAPHY**9696/42**

Paper 4 Advanced Human Geography Options

May/June 2021

INSERT

1 hour 30 minutes

INFORMATION

- This insert contains all the resources referred to in the questions.
- You may annotate this insert and use the blank spaces for planning. **Do not write your answers** on the insert.



This document has **8** pages. Any blank pages are indicated.

Fig. 1.1 for Question 1

Percentage of farms and percentage of agricultural land, by farm size, in the EU, 2016

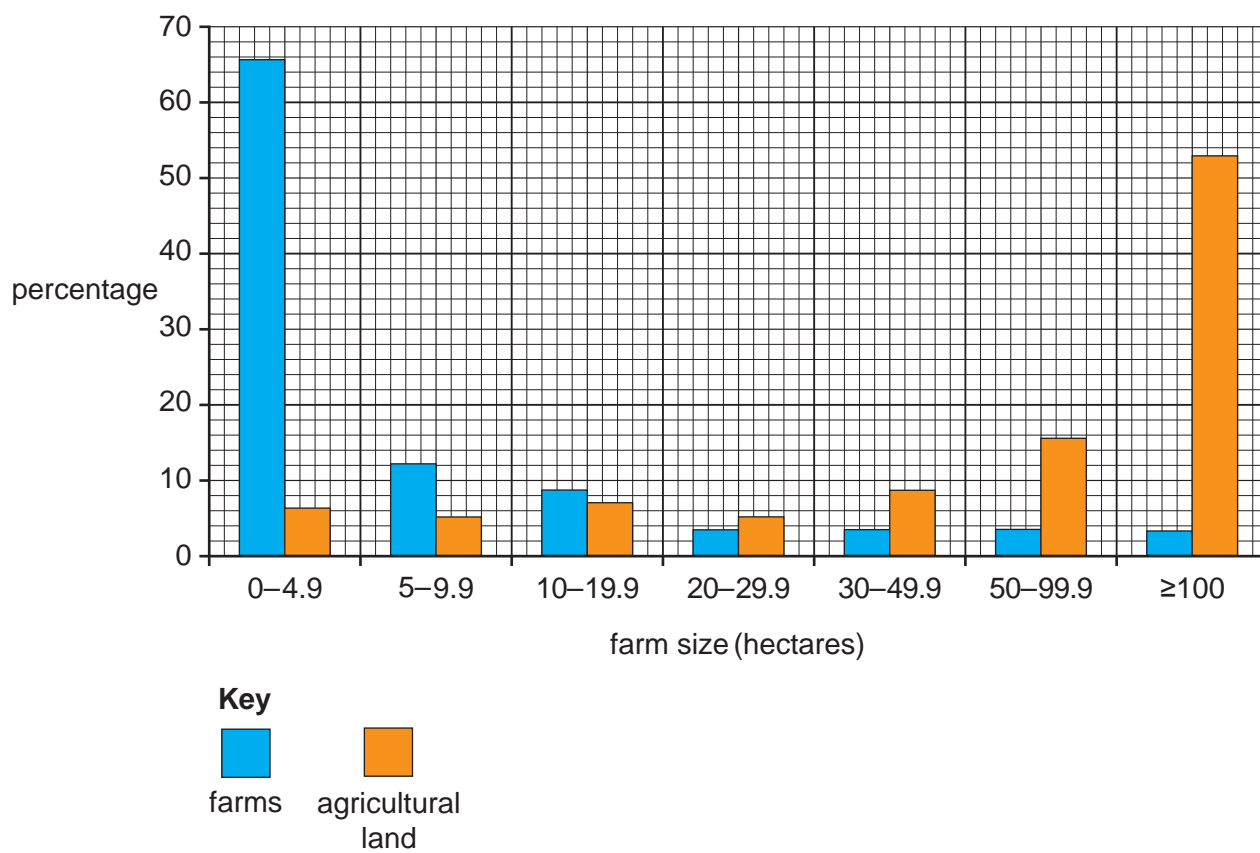


Fig. 4.1 for Question 4

Wind turbines in Andalucía, Spain, an HIC in Europe



Fig. 7.1 and Fig. 7.2 for Question 7

Net overseas development aid (US\$) received per person in South America, 2015

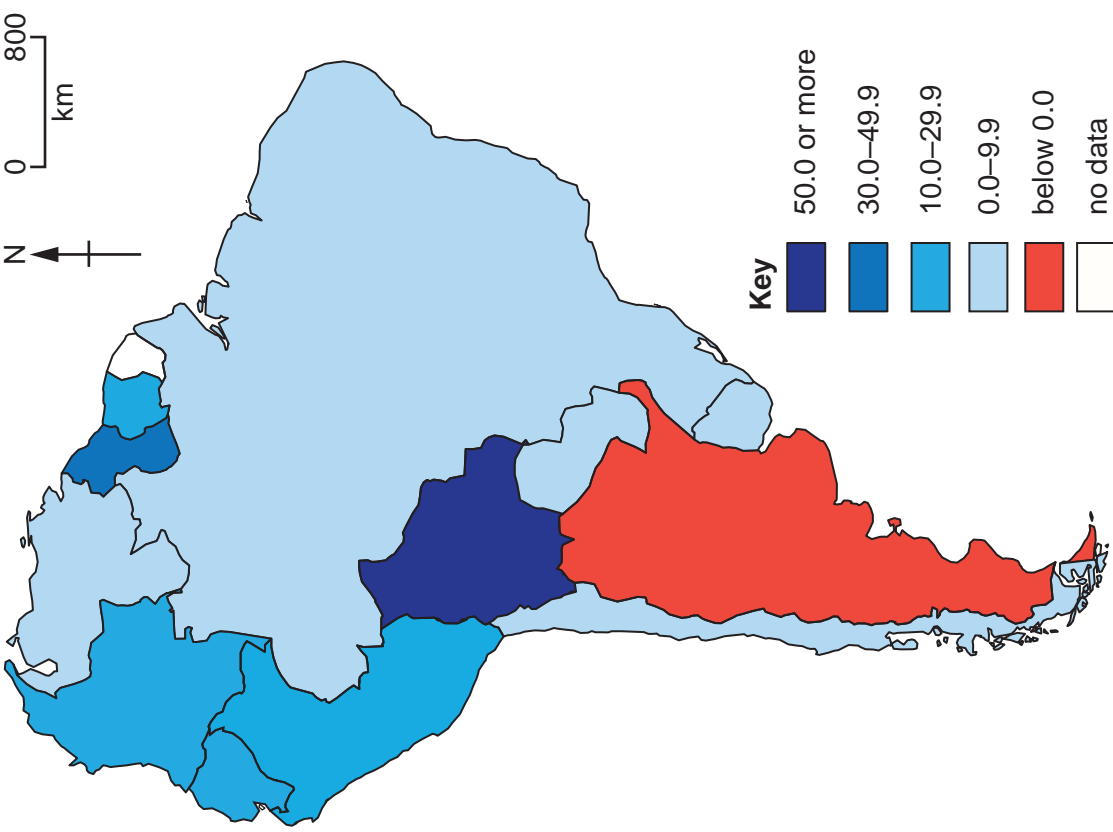


Fig. 7.1

The countries of South America

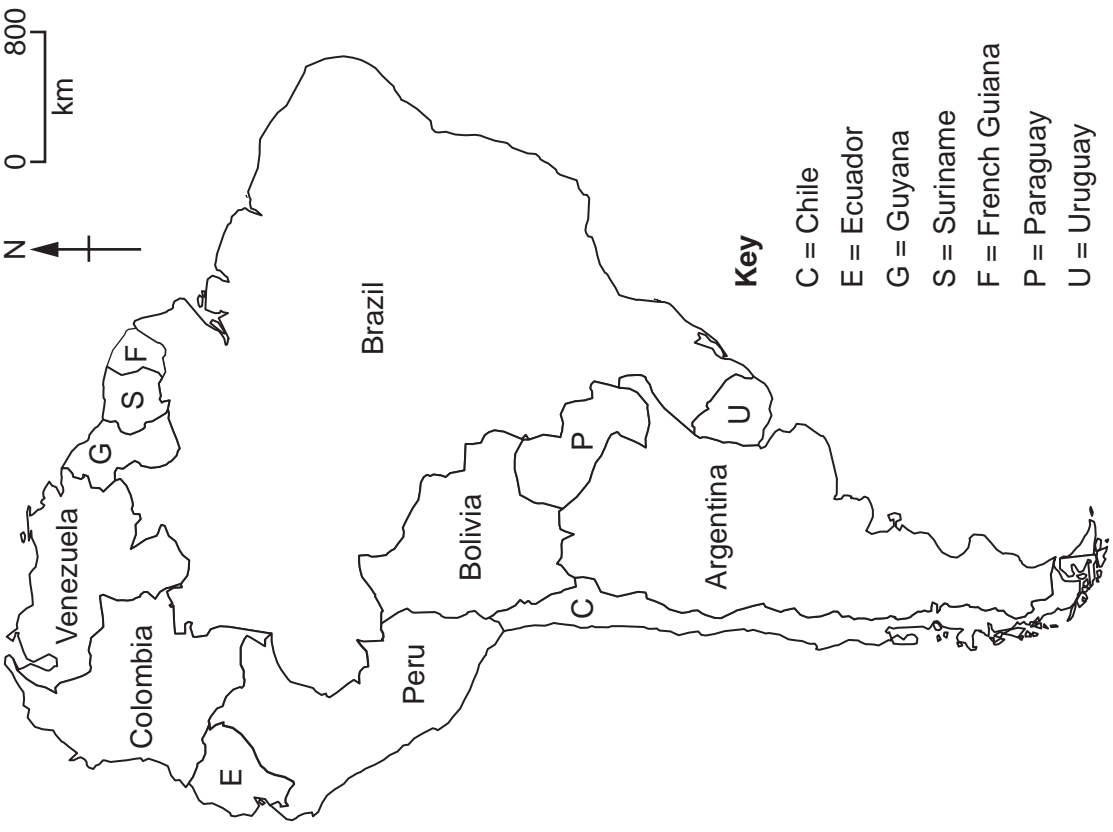


Fig. 7.2

Table 10.1 for Question 10

Income distribution for selected countries in Africa, 2018

country	Botswana (MIC)	Kenya (MIC)	Tanzania (LIC)
percentage of population	percentage of income		
top 20%	65.0	54.2	45.8
fourth 20%	17.0	19.7	20.7
third 20%	9.5	12.8	15.0
second 20%	5.7	8.6	11.1
bottom 20%	2.8	4.7	7.4

BLANK PAGE

BLANK PAGE

BLANK PAGE

The boundaries and names shown, the designations used and the presentation of material on any maps contained in this question paper/insert do not imply official endorsement or acceptance by Cambridge Assessment International Education concerning the legal status of any country, territory, or area or any of its authorities, or of the delimitation of its frontiers or boundaries.

Permission to reproduce items where third-party owned material protected by copyright is included has been sought and cleared where possible. Every reasonable effort has been made by the publisher (UCLES) to trace copyright holders, but if any items requiring clearance have unwittingly been included, the publisher will be pleased to make amends at the earliest possible opportunity.

To avoid the issue of disclosure of answer-related information to candidates, all copyright acknowledgements are reproduced online in the Cambridge Assessment International Education Copyright Acknowledgements Booklet. This is produced for each series of examinations and is freely available to download at www.cambridgeinternational.org after the live examination series.

Cambridge Assessment International Education is part of the Cambridge Assessment Group. Cambridge Assessment is the brand name of the University of Cambridge Local Examinations Syndicate (UCLES), which itself is a department of the University of Cambridge.